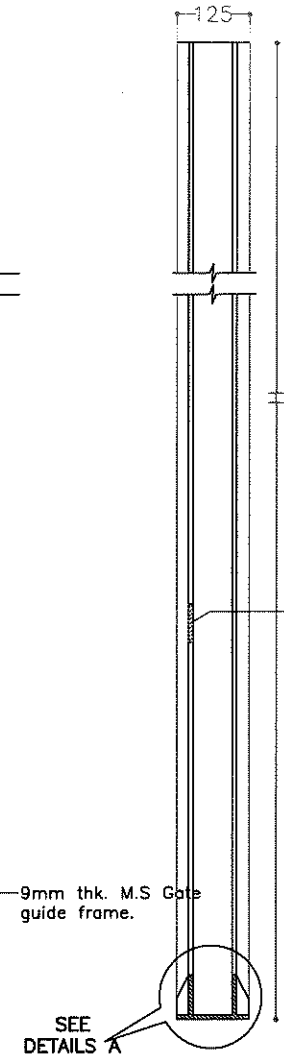
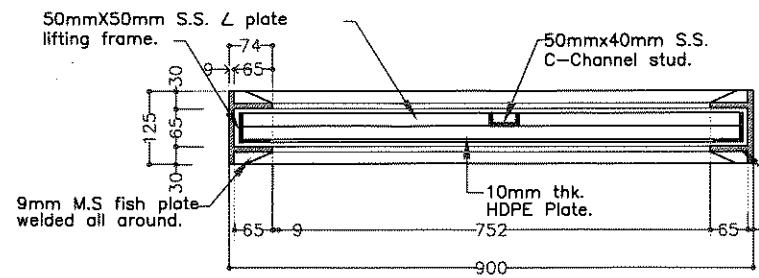


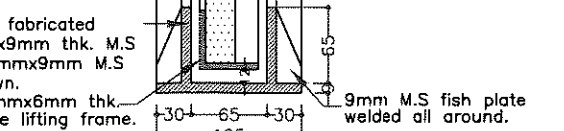
**ELEVATION OF GATE FRAME**  
scale 1:100



**SECTION A-A**  
scale 1:100

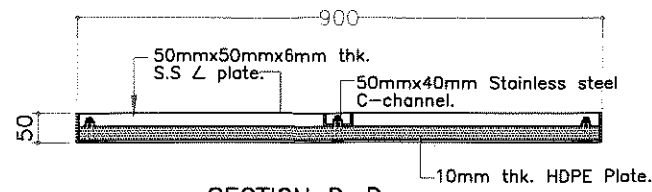


**SECTIONAL PLAN**  
scale 1:100

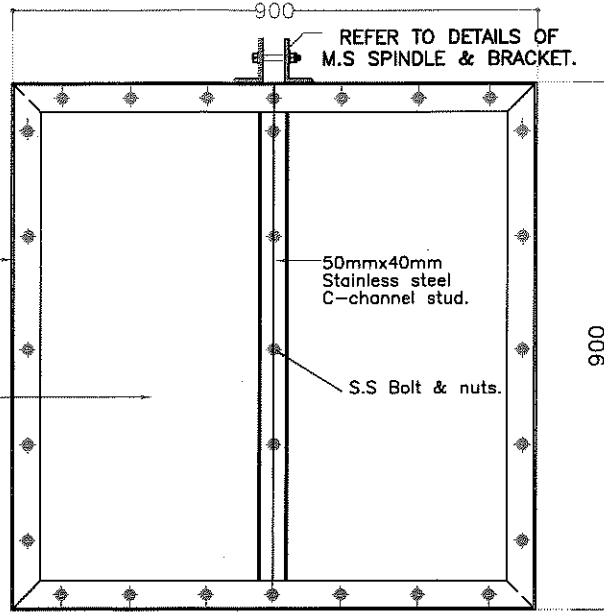


**DETAILS A**  
scale 1:50

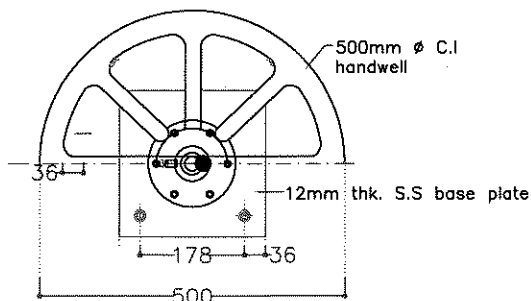
Groove to be fabricated from 125mmx9mm thk. M.S. plate and 65mmx9mm thk M.S. plate as shown.



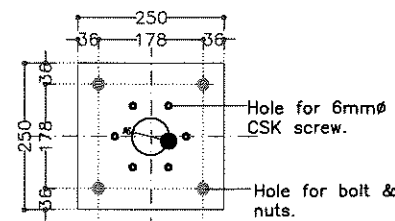
**SECTION D-D**



**BACK ELEVATION**  
LIFTING HDPE DEVICE FRAME  
(scale 1:25)



**PLAN OF HANDWHEEL**



**DETAILS OF M.S. BASE PLATE**

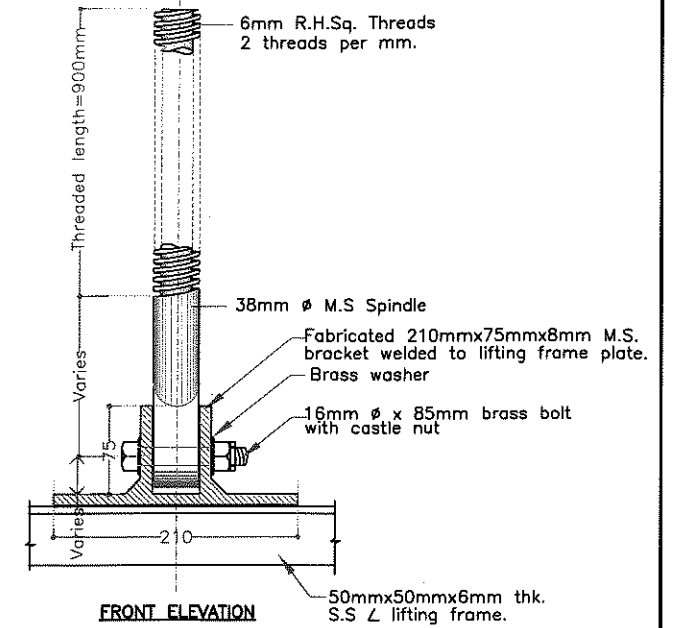
38mm  $\phi$  M.S Spindle

Fabricated 75mmx50mm x8mm thk. S.S. bracket welded to lifting frame.

50mmx50mmx6mm thk. S.S L plate lifting frame.

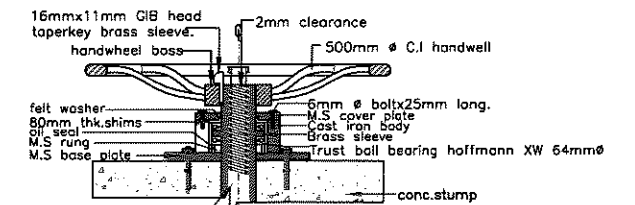
10mm thk. HDPE Plate.

**SIDE ELEVATION**

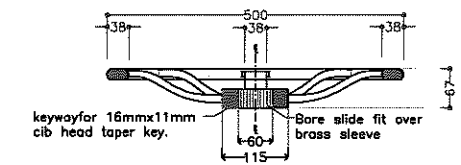


**FRONT ELEVATION**

**DETAIL OF M.S SPINDLE & BRACKET**  
scale 1: 50



**SECTIONAL ELEVATION**



**DETAILS OF C.I. HANDWHEEL**

**NOTES :**

- All dimensions in millimeters unless otherwise indicated.
- PAINTING**  
As specified for all exposed concrete surface.
- All metal surfaces to be cleaned with emery cloth and painted with one coat of red oxide and two finishing coats of coal tar epoxy.
- M.S. plate should be properly greased at the contact area.
- All welding must be done in the workshop and proper precautions taken to prevent excessive distortion of members.
- The surface of the guides should be machined smoothly.
- S.S.=Stainless steel, L = Angle plate.
- The height of gate guide 'H' is to be determined and approved by SO



**KAWASAN PEMBANGUNAN PERTANIAN BERSEPADU PULAU PINANG**  
Jalan Jelawat, Bandar Seberang Jaya,  
13700 Perai, Pulau Pinang  
Tel: 04-3907801  
Fax no: 04-3907803

BUTIRAN	NOTA / PINDAAN	TANDA TANGAN	TARIKH
1	PINDAAN 1		4/1/2018

**KAWASAN PEMBANGUNAN PERTANIAN BERSEPADU PULAU PINANG**

**DETAILS 750mm  $\phi$  HDPE SCREWDOWN GATE GUIDE**

INILAH PELAN YANG BERKENANAN DIDALAM KONTRAK NO.:

HJ. KHILUDDIN BIN DARUS  
JURUTERA PROJEK  
KAWASAN PEMBANGUNAN PERTANIAN BERSEPADU  
NEGERI PULAU PINANG

TANDATANGAN	NAMA	TARIKH	SEKIL: 1 : 100 & AS SHOWN
			NO. PELAN: WDP/ST/17-54
			NO. NEG.
			NO. KABINET